

# SHOULD I TRASH IT OR RECYCLE IT?



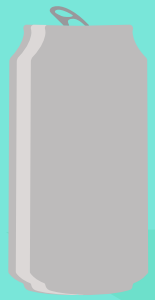
## PLASTIC

IS IT A BAG\*  
OR STYROFOAM?

TRASH  
\*OR BRING BAGS  
TO FOODLION  
OR WALMART\*

IS IT  
#1-7?

RINSE AND  
RECYCLE IN  
BLUE BIN



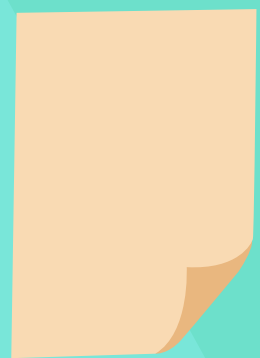
## ALUMINUM

IF A MAGNET  
STICKS...

TRASH

IF A MAGNET  
DOESN'T STICK...

RINSE AND  
RECYCLE IN  
GREEN BIN



## PAPER

IS IT A MAGAZINE  
OR NEWSPAPER?

RECYCLE IN  
BLUE BINS

IF NOT...

RECYCLE IN  
WHITE BIN



## CARDBOARD

IS THERE FOOD  
RESIDUE ON IT?

TRASH

IS IT  
CLEAN?

FLATTEN AND  
PLACE BY  
RECYCLE BIN  
OR BASEMENT  
OF RES. HALL